

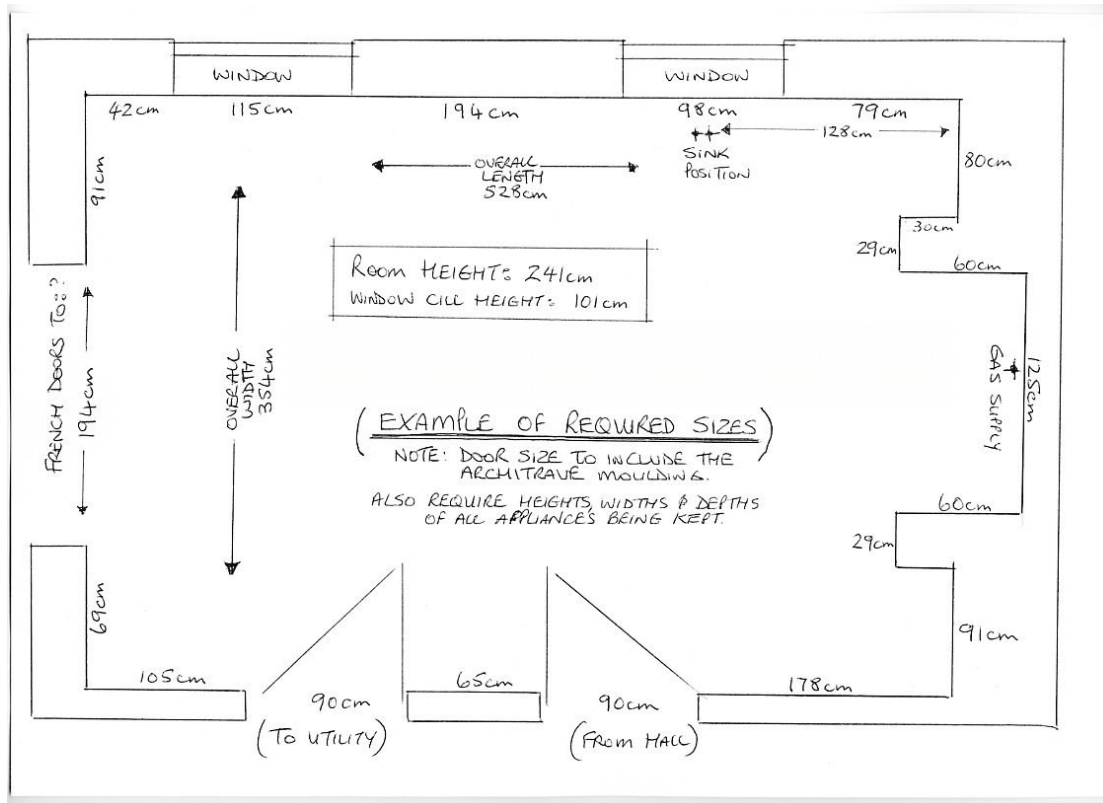
# HANDMADE KITCHENS

OF CHRISTCHURCH LTD

## Remote Design – Information Required

To create a design remotely, the Designer needs your room layout, room dimensions, and any other information you think is relevant.

Below is a typical room layout showing the dimensions he needs. You can use an Architects drawing, or your own freehand drawing.



The following list might help to ensure that you include everything:

1. Overall width of kitchen
2. Overall length of kitchen.
3. Width of each wall.
4. Width and position of each window
5. Height of each window cill
6. Width (including architrave) and position of each door
7. Where each door leads to.
8. Room height.
9. Position and size of any beams, pipes, etc
10. Height, width and depth of any appliance you will be keeping.

Please call us on 01202 475515 if you need any clarification.

91 Bargates, Christchurch, Dorset, BH23 1QQ  
Tel: 01202 475515 email: [sales@handmadekitchens-direct.co.uk](mailto:sales@handmadekitchens-direct.co.uk)  
Website: [www.handmadekitchens-direct.co.uk](http://www.handmadekitchens-direct.co.uk)

VAT Number: 797 5310 90

Registered Office: 808-810 Wimborne Road, Moordown, Bournemouth, BH9 2DT  
Registration Number: 4937103